

EPGC inFOREMer

May 1, 2010

Web Site: www.elpasogolfclub.com
Golf Shop email: golfclub@fairpoint.net
Lane's email: golfclubgm@fairpoint.net



Are you planning a meeting, luncheon, or party? Save yourself the time and effort of cooking and cleaning. Host your next party: graduation, birthday, office, card, shower, reunion, bachelor, or engagement—here at the El Paso Golf Club.

Please speak with Lane for details.



Mother's Day Brunch

Sunday, May 9, 2010 / Serving from 10:00am - 2:00pm

*****RESERVATIONS are REQUIRED*****

Please call (309) 527-5225 ext. 0 / \$14.75 per person

Children up to age 5 eat free; Children age 6-12 eat for \$8.00

Rhonda will have a beautiful Brunch Buffet for your dining pleasure!

There will be NO regular breakfast menu today but there will be a golfers buffet available from 6:00am-12:00noon.

The lunch menu will be available from 2:00pm-7:00pm

RESTAURANT SCHEDULE

Friday & Saturday Evening Features

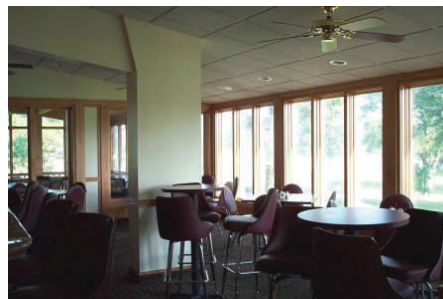
April 30 & May 1 - Ribs

May 7 & 8 - Tilapia

May 14 - Mexican Buffet

May 21 & 22 - Chicken & Spaghetti

May 28 & 29 - Pork w/Apple Stuffing



Wednesday Evening Specials

May 5 - Meat Loaf / May 12 - Ribs / May 19 - Fish Fry / May 26 - Cook's Choice

\$2.00 Tuesday's

During the month of May on Tuesday's **ONLY** the bar will have all domestic beer's for just \$2.00 (imports \$2.50). Come out to EPGC on any Tuesday in May, play golf, and get any domestic beer for \$2.00.

May Events

Fivesome are no longer permitted during regular business hours until further notice.

Friday, April 30 - ISU Construction Management Outing, 10:00am Shotgun, 100-120 golfers, course closed until approx. 3:00pm

Sat. May 1 & Sun. May 2 - Weekend Permanent Tee Times Begin

Monday, May 3 - **Men's League** Team Shotgun at 5:00pm on front nine

Tuesday, May 4 - Women's Day Begins

Wednesday, May 5 - Couples League Begins, 9:00am start

Thursday, May 6 - Men's Day Begins

Friday, May 14 - Margarita Night Afternoon Golf Event, details on page 3

Monday, May 17 - Shriners Outing, 12:00 Shotgun, 80-100 golfers, course closed 12:00-5:00 approx.

Friday, May 21 - Associated Constructors Outing, 12:00 start, tee times available for members

Monday, May 31 - Memorial Day Members Scramble, 8:00am Shotgun, 100 golfers approx.

Friday, June 4 - City of El Paso Golf Outing, 8:00am Shotgun, 100 golfers approx., course closed until approx. 1:30pm

Monday, June 7 - Junior Golf Start

Memorial Day Scramble

Monday, May 31, 2010 / 8:00am Shotgun Start

This event will be a 5 player best position scramble format. The event is open to men and women golf members only. The A & B players will play best position and the C, D, E players will play best position. The two scores combined on each hole will be the team score. The golf committee will do the pairings for each team, no special requests, please. The golf committee will make every effort to keep the teams as fair as possible as most teams will be a mix of men and women.

1. Please sign up by calling the Golf Shop or sign up on the bulletin board. ENTRIES accepted through Saturday, May 29th. This will give the committee time to get the pairings finished and the event set up for Monday play. The cost per person is \$35.00 which includes: buffet breakfast, buffet lunch & prizes. Cart charges are extra. All prizes will be returned in EPGC Gift Cards.
2. **NOTE: There will be a 1:30pm shotgun start for all other regular member play on Monday. Please call the Golf Shop to make a starting hole assignment for the 1:30pm shotgun.**

Women's & Men's Day Rules

TUESDAY – LADIES DAY: The first tee will be reserved for morning Ladies League activities from 7:00 a.m. – 10:00 a.m., May through September and for the Evening Ladies League play from 4:00 p.m. – 6:00 p.m., May through August. Both leagues have the right to close the entire course for special events. Play on the back nine will be allowed provided there is no cross over interference from front nine play and a significant distance is established from Ladies League play. **Note:** The Evening Ladies League starts play on the back nine on the last Tuesday of each month from May through August.

THURSDAY – MEN'S DAY: From May 1st through September 30th, Ladies are allowed morning play only. Ladies tee times should be scheduled to insure that play is completed on the front by 11:00 a.m. and all ladies shall be completely off the golf course by 1:00 p.m. The entire course may be closed for special men's events. **Exception:** Ladies may be allowed on the course after the times mentioned above, as *spectators only* to watch club sanctioned events.

Margarita Night Afternoon Golf

Friday, May 14, 2010

Event Format: Two person 1 best ball (Net) per hole. Teams can be 2 men, 2 ladies or 1 man & 1 lady. The event is on the front nine and tee times can be made anytime during the afternoon. Entry fee is \$10.00 per two-some and includes 1 - \$3.00 drink ticket per player. Additional margarita's may be purchased for \$3.00 each and each ticket will put you into a drawing for an EPGC Gift Card (**must print your name on the ticket for the drawing**).

The drink cart will have a margarita bar set up at 2:00pm. The restaurant will have a Mexican food bar set up for your dining pleasure. The Mexican food bar is optional.

On hole # 1 tee: All players MUST tee wearing a Mexican sombrero (Sombrero will be provided).

On hole # 3 tee: Hit your tee shot inside the habanero pepper on the green and deduct 1 or 2 strokes from your team NET score. If you do not hit into the pepper you will still have another chance to deduct 1 or 2 strokes when you reach the 4th tee.

On hole # 9 green: After you finish the hole you will get a chance to deduct 1 or 2 strokes from your team NET score. Each player will get one swing to hit the pinyata. If you hit the pinyata you will get to deduct 1 from your score (there is a slight twist to this which will be explained before you swing at the pinyata)

We hope to have many of you participate in this afternoon of golf and Mexican fun. You can sign up for this golf event when you make your tee time or when you reach the 1st tee. Steve or Kyle will be there to explain the event details for you.

New Golf Members of El Paso Golf Club

We have several new members of El Paso Golf Club. When you meet these new members please welcome them to the club.

- | | | |
|---------------------|--------------------|------------------|
| 1. Marlin Miller | 20. Dave Pendell | 39. Steve Kool |
| 2. Hugh Conway | 21. Oren Pomeroy | 40. Dean Kohn |
| 3. Larry Wampler | 22. Dean Michal | 41. Leo Kepner |
| 4. Rollie Mercer | 23. Kathy Petri | 42. Jason Greene |
| 5. Stephen Wilson | 24. Tom Scott | |
| 6. Leroy Shouse | 25. Tom Harris | |
| 7. Brent Reddish | 26. George Redell | |
| 8. Dave Donaldson | 27. Mike Gallagher | |
| 9. Al Bedell | 28. Phil West | |
| 10. Tom Fulkerson | 29. Chuck Bradle | |
| 11. Greg Alderman | 30. Bill Gale | |
| 12. Kevin Parkhouse | 31. Jon Slater | |
| 13. Gordon Ropp | 32. Vincente Adame | |
| 14. Josh Becker | 33. Ike Chiu | |
| 15. Brian Waddell | 34. Red Pitcher | |
| 16. Chad Anderson | 35. Julie Baird | |
| 17. Gary Oldeen | 36. Matt Stuckel | |
| 18. Mike Mounce | 37. Wayne Furrow | |
| 19. John Socha | 38. Bob Martin Jr. | |

EPGC inFOREmer

El Paso Golf Club, Inc.
2860 County Road 600 N
El Paso, IL. 61738-1743

Address Service Requested

PRESORTED STANDARD

U.S. POSTAGE

PAID

PERMIT NO. 58

EL PASO, IL.



Friendly Golfers Play Here

Memorial Day Members Scramble

Monday, May 31, 2010

8:00am Shotgun Start

Event Format: 5 player scramble



A & B players play a scramble and the C, D, E players play a scramble. The two scores are then added together on each hole for the 5 player team score. This is one of the most popular events of the year.

Sign up individually in the Golf Shop!!!